

REVELSTOKE GENERATING STATION UNIT 6 PROJECT

SCHEDULE A

CERTIFIED PROJECT DESCRIPTION FOR AN ENVIRONMENTAL ASSESSMENT CERTIFICATE

August 2018

INTERPRETATION

In this Certified Project Description, terms that are capitalized but not defined have the same meaning as those terms defined elsewhere in this Certificate, including in the Table of Conditions.

This Certified Project Description describes the Project authorized by this Certificate, but does not obligate the Holder to construct or operate any aspect of the Project unless otherwise stated.

DEFINITIONS

Holder	BC Hydro or, if this Certificate has been transferred in accordance with the conditions below, the person to whom this Certificate has been transferred in accordance with such conditions.
--------	---

1. OVERVIEW

The Project consists of installing a turbine generator unit into an existing empty unit bay at the Revelstoke Generating Station located on the Columbia River five kilometres upstream from the City of Revelstoke, as well as the installation of a capacitor station west of Summerland between Vaseux Lake Terminal Station and Nicola Substation.

2. PROJECT COMPONENTS

Unless otherwise specified, all components of the Project must be located within the Certified Project Area shown on Figures 2 and 3 in Appendix A of this document.

The Project consists of the following components, which are located in the Certified Project Area shown on Figures 2 and 3:

A. GENERATING UNIT

- A steel penstock connecting the existing embedded ends;
- A vertical shaft Francis turbine, with a maximum discharge capability of 500 cubic meters per second at rated head and rated power output;
- A generator with a maximum capacity of 600 mega-volt ampere;
- Up to three single phase generator transformers;
- Generation and transmission-related gas-insulated switchgear, complete with associated mechanical and electrical equipment;
- Ancillary mechanical and electrical equipment required for operation of the Francis turbine and generator unit;
- Rock fall fencing on the rockface below Highway 23 and between the powerhouse and the dam on the Unit 6 end of the powerhouse; and
- Permanent warehouse.

B. CAPACITOR STATION

- Fenced station area up to two hectares in size, including:
 - Control building;
 - High voltage electrical equipment;
 - Storage shed;
 - Microwave communication tower; and
 - Standby diesel generator;
- A new 500 kilovolt transmission tower on the existing transmission right-of-way and modifications to nearby existing transmission towers (76-02, 77-01, 77-02, 78-01, 78-02, 78-03) to physically connect the existing transmission line to the new capacitor station and for the addition of an overhead shield wire; and
- A new access road off of the existing Isintok-McNulty Forest Service Road.

3. TEMPORARY COMPONENTS

The Project consists of the following components, which may be located anywhere within or outside the Certified Project Area, during Construction:

- Office buildings;
- Parking areas;
- Laydown areas;
- Temporary storage areas;
- Temporary warehouse facilities; and
- Portable concrete batch plant for use during Construction.

APPENDIX A: CERTIFIED PROJECT DESCRIPTION MAPBOOK

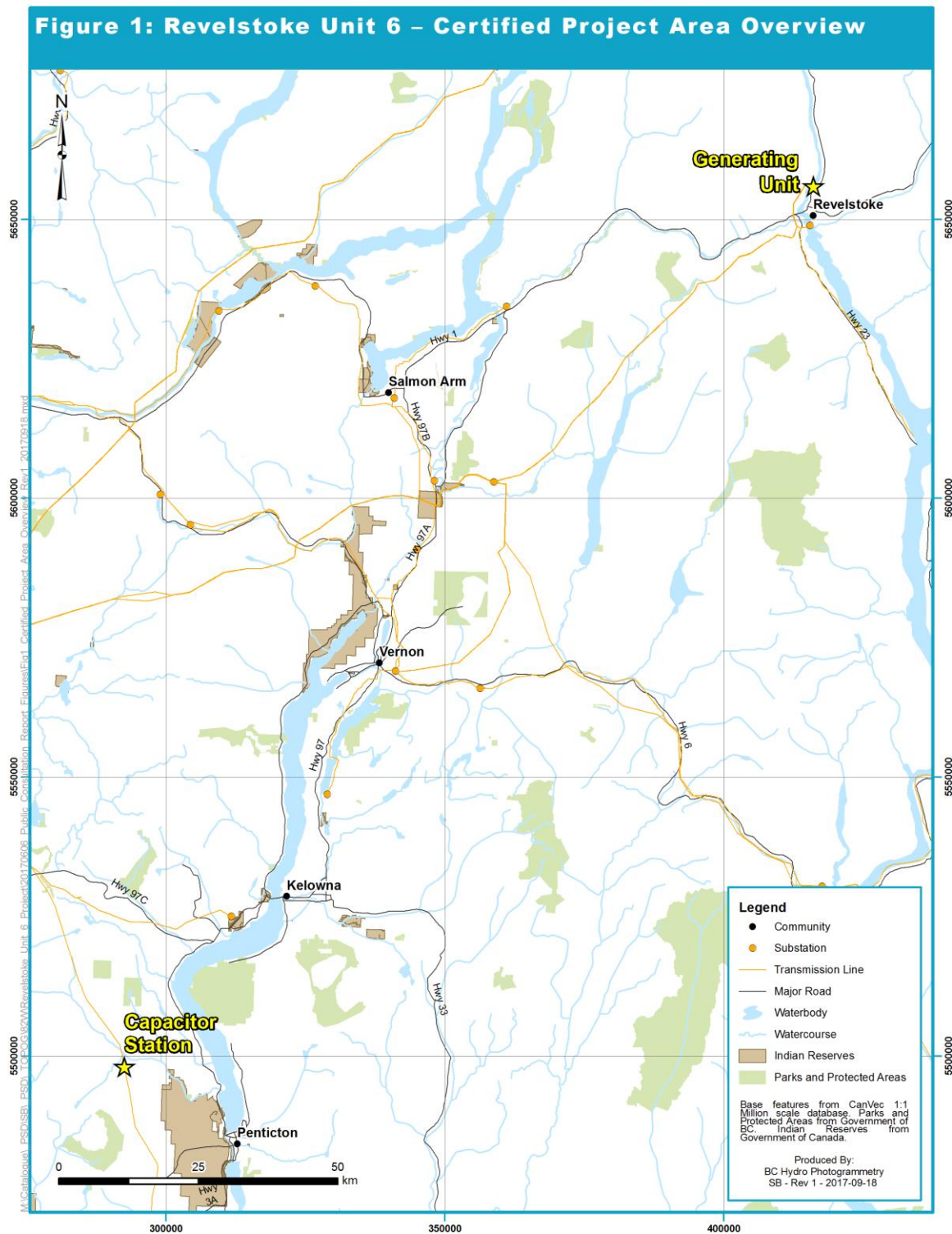


Figure 2: Revelstoke Unit 6 Certified Project Area – Generating Unit

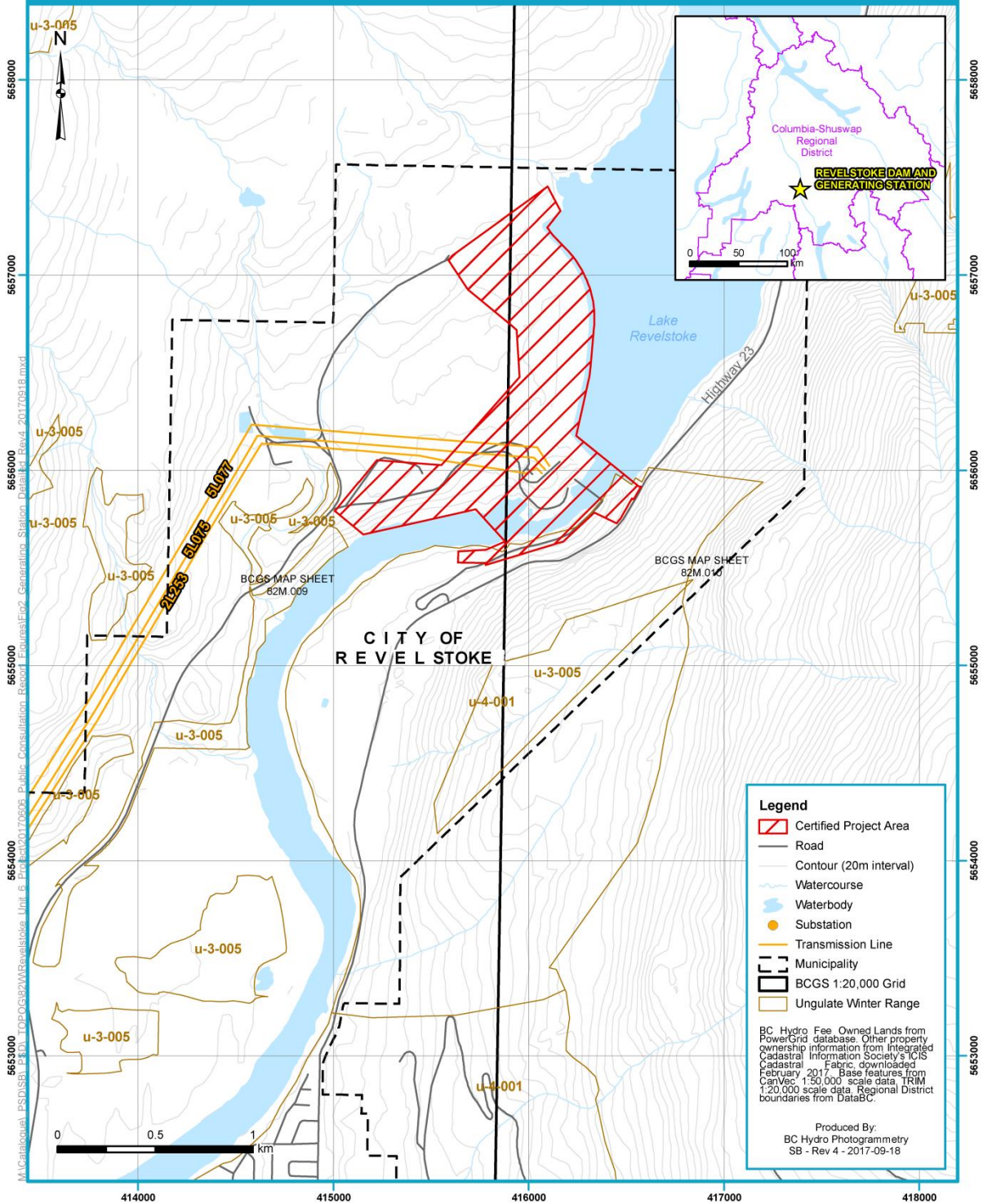


Figure 3: Revelstoke Unit 6 Certified Project Area – Capacitor Station

